



*Sreya*  
AVIATION

ENGINES / AVIONICS

Built in the Czech Republic, the Walter M601 powerplant has earned an enviable reputation for outstanding reliability and durability among Let 410 (19-seat commuter) operators in harsh regions around the world. As the commercial operators upgrade to the newer Walter M601 E-11 series, their used M601D powerplants have recently become available for use in sport and recreational airplanes. Sreya Aviation offers these powerplants to Envoy builders looking for the best combination of performance to price value.

**PACKAGE INCLUDES:**

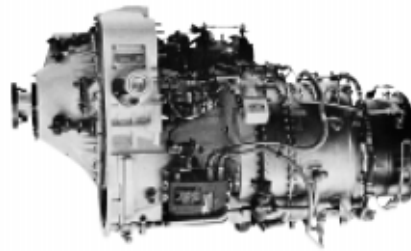
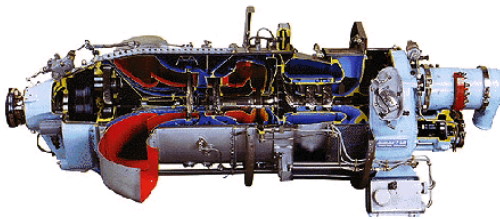
- Walter M601D turboprop used engine (“as is - on condition”) IRAN rebuild by Diemech Turbines
- AVIA 5 blade constant speed prop & spinner, with full feather & reverse Engine mount
- Composite Cowling

**INCLUDES:** Oil cooler, Oil lines, Electric fuel pump, Wiring harness, Relays, Voltage regulator, Starter-Generator, Ignitors, Exhaust, Control Cables, Toggle Switches, Annunciator, Gascolator, Power Quadrant, Baffling Kit. Autostart System with EHT (Electro-Hydraulic Transducer) Control.

Since 1993, over 500 TPE331 re-manufactured engines have been successfully introduced into service worldwide. The predominant model choices for these rugged, responsive, fixed-shaft engines have been the TPE331-1, -2, -5, -6, -10, -11, and -12. Since the basic frame size of all TPE331 engines is the same for -1 through -12 engines, the selection of the fuel efficient TPE331 engine ensures that the aircraft weight increases can be accommodated with each succeeding engine model.

**HONEYWELL TPE 331 CAM ENGINE INCLUDES:**

- Complete inspection of all parts
- Factory corrosion protection
- All new seals and gaskets
- High new part content in turbine section
- Factory test cell dynamometer test
- Factory certified Engine Log Book
- Access to factory training school
- Factory one-year/600-hour warranty
- Factory support
- Field Service Engineers worldwide



**S P E C I F I C A T I O N S**

(Sea level-standard day)

	WALTER		HONEYWELL	
	601D	601E	TPE331-10	TPE331-12
Power output: shp	657	657	940	1,100
eshp	724	751	944	1,151
SFC:	—	—	—	0.547
ESFC:	.666	.674	0.534	0.522
RPM: gas gen	36,293	36,293	41,730	41,730
shaft output	2080	2080	2,000 cw	—
	—	—	1,591 ccw	1,591 ccw
Weight:	426 lb	445 lb	375 lb	407 lb
TBO:	1,800	2,000 -3,000	—	—
Pressure ratio:	—	—	10.37	10.18
Airflow:	—	—	7.7 lb/sec	—
PWR/WT ratio:	1.54	1.48	2.51	2.72
Start capability:	—	—	SL - FL300	SL - FL200
Operational limits:	—	—	SL - FL450	SL - FL350



OP Integrated is the latest in the line of Electronic Flight Instrument System (EFIS) and Multi-function Display (MFD) products by Op Technologies. Years of avionics engineering experience have led to this evolution in the Flight Op product line to provide the only truly integrated flight deck solution developed specifically for the experimental aircraft market. OP Integrated combines the Flight Op EFIS

and MFD display units with navigation receivers, communication transceivers and a GPS/WAAS receiver to create a powerful advanced flight deck solution.

---

*The OP Integrated Flight Deck consists of the following instrumentation:*

- A Primary Flight Display (PFD) including
  - Airspeed Indicator
  - Attitude Indicator
  - Altitude Indicator
  - Vertical Speed Indicator
  - Highway-in-the-sky Guidance
  - 3-D Real-Time Synthetic Vision
  - Real-Time Traffic Display
  - Airports Displayed in Synthetic Vision
  - Glideslope/Deviation Indicator
- An Electronic Horizontal Situational Indicator (HSI) including
  - Color-coded Airspace
  - Approach Procedure Display
  - Course Pointer
  - 2 Bearing Pointers
  - DME Display
  - Course Deviation
  - Color Moving Map
  - Graphical Terrain
  - Graphical Weather, including
    - NOTAMS
    - METARS
    - SIGMETS
    - TFRs
  - Traffic Display
  - Strikefinder Display
  - Map De-clutter Functions
  - Automatic Waypoint Sequencing
  - Bearing, Distance and ETA to Active Waypoint
  - Nearest Airport Search
  - "Direct-To" Navigation
  - Clock
  - Timer
  - Destination Page
    - Distance and ETA at destination
    - Predicted fuel remaining in volume and time at destination
    - Approach and airport radio frequencies
- Engine Indicator and Crew Alert System (EICAS) which
  - Displays up to 10 engine instruments

